



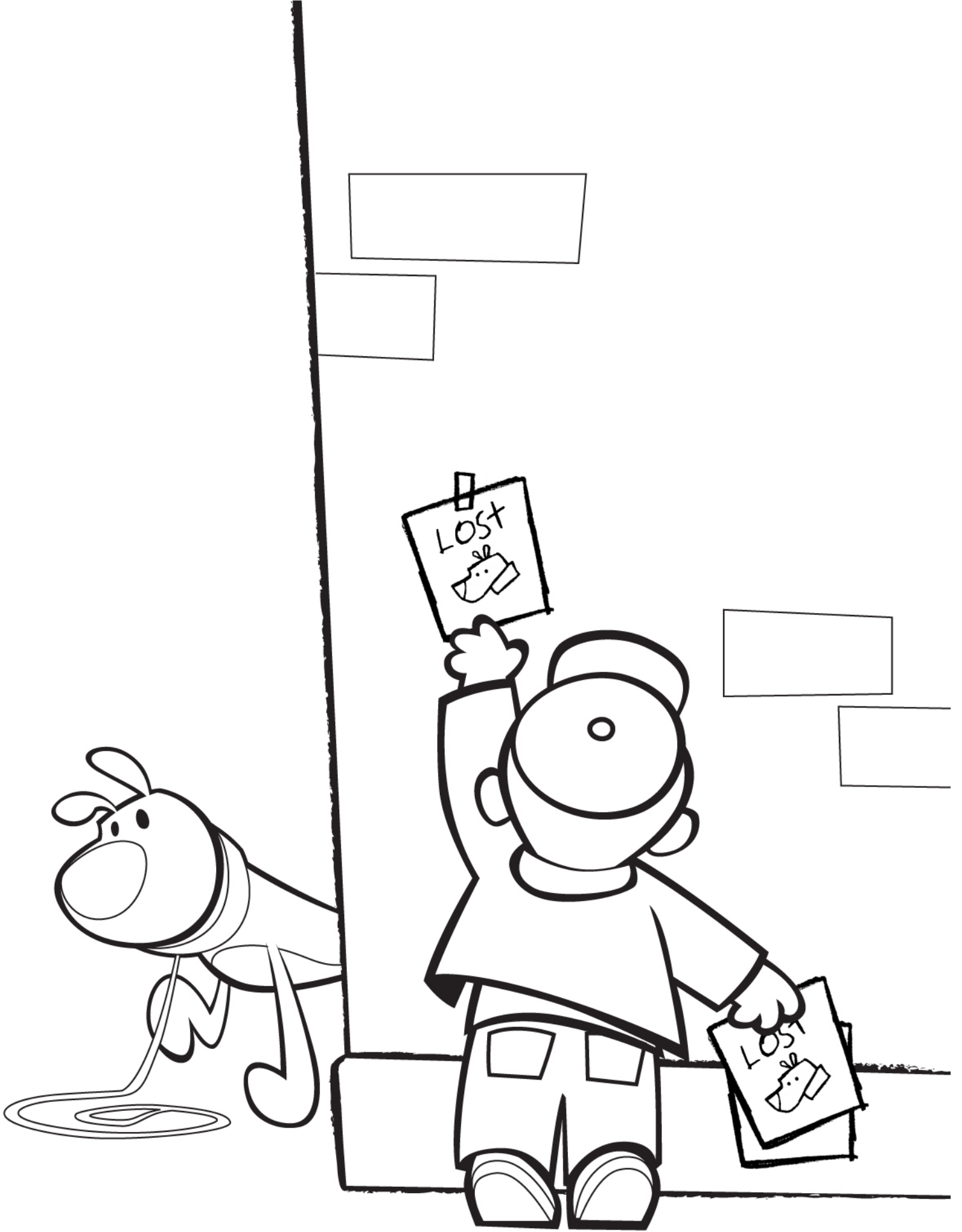
## Activity Kit



**This is Larry.**



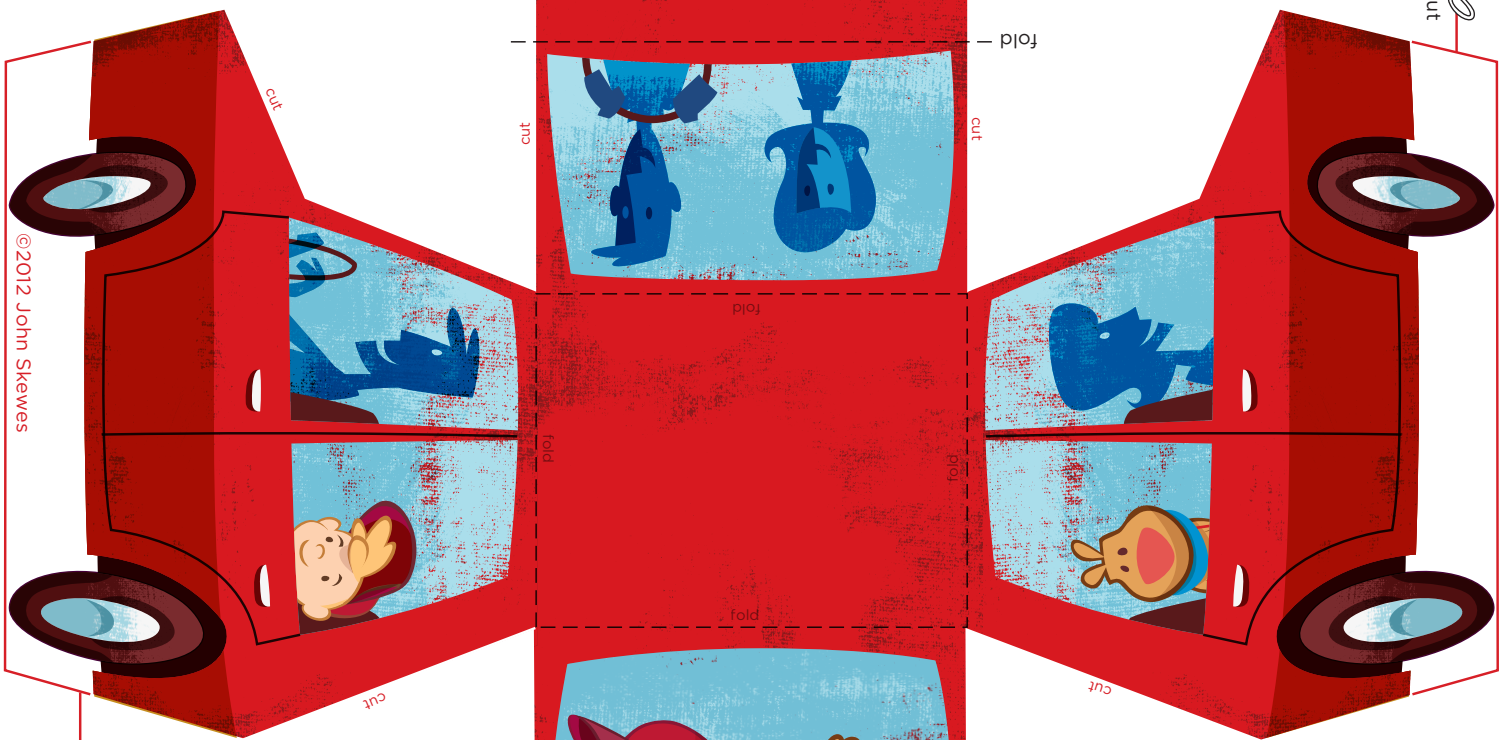
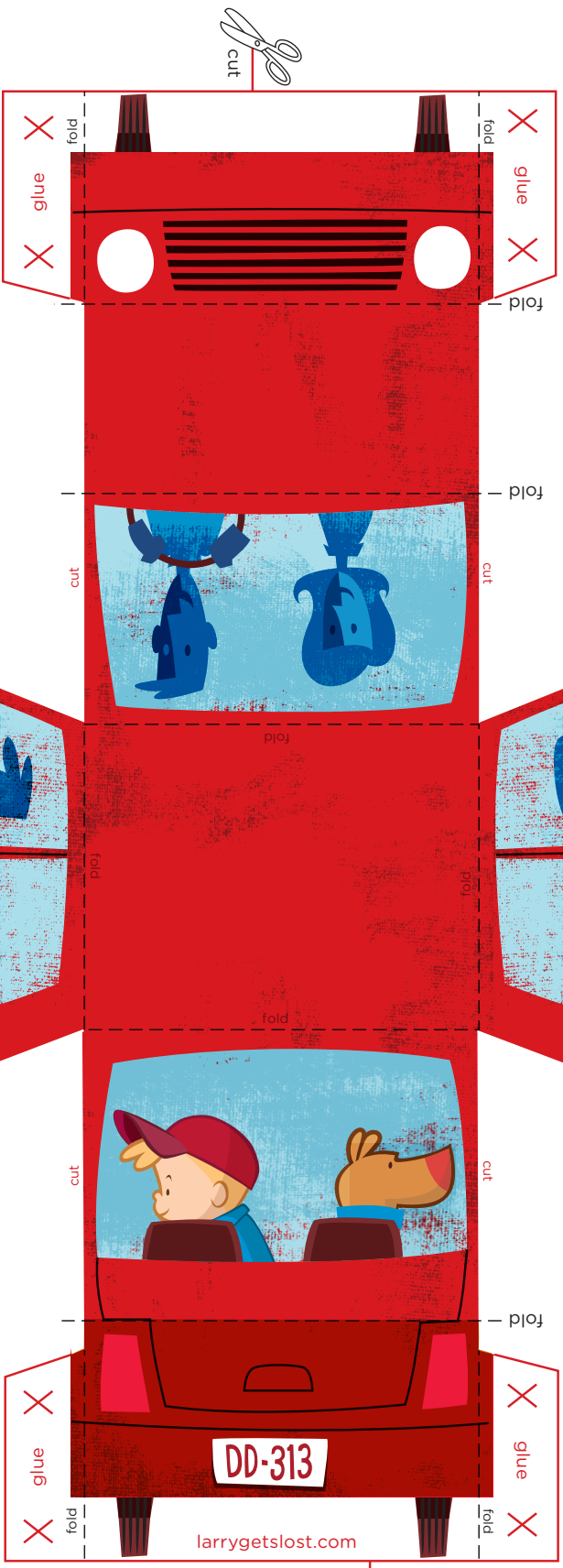
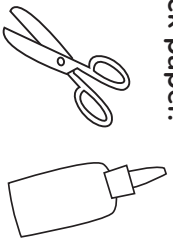
**This is Pete.**







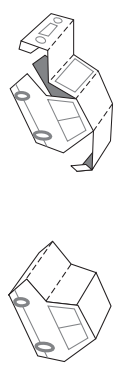
What you need:  
 glue or glue stick, scissors  
*(Be careful! Ask your  
 parents for help.)*  
 For best results, print  
 on **thick paper**.



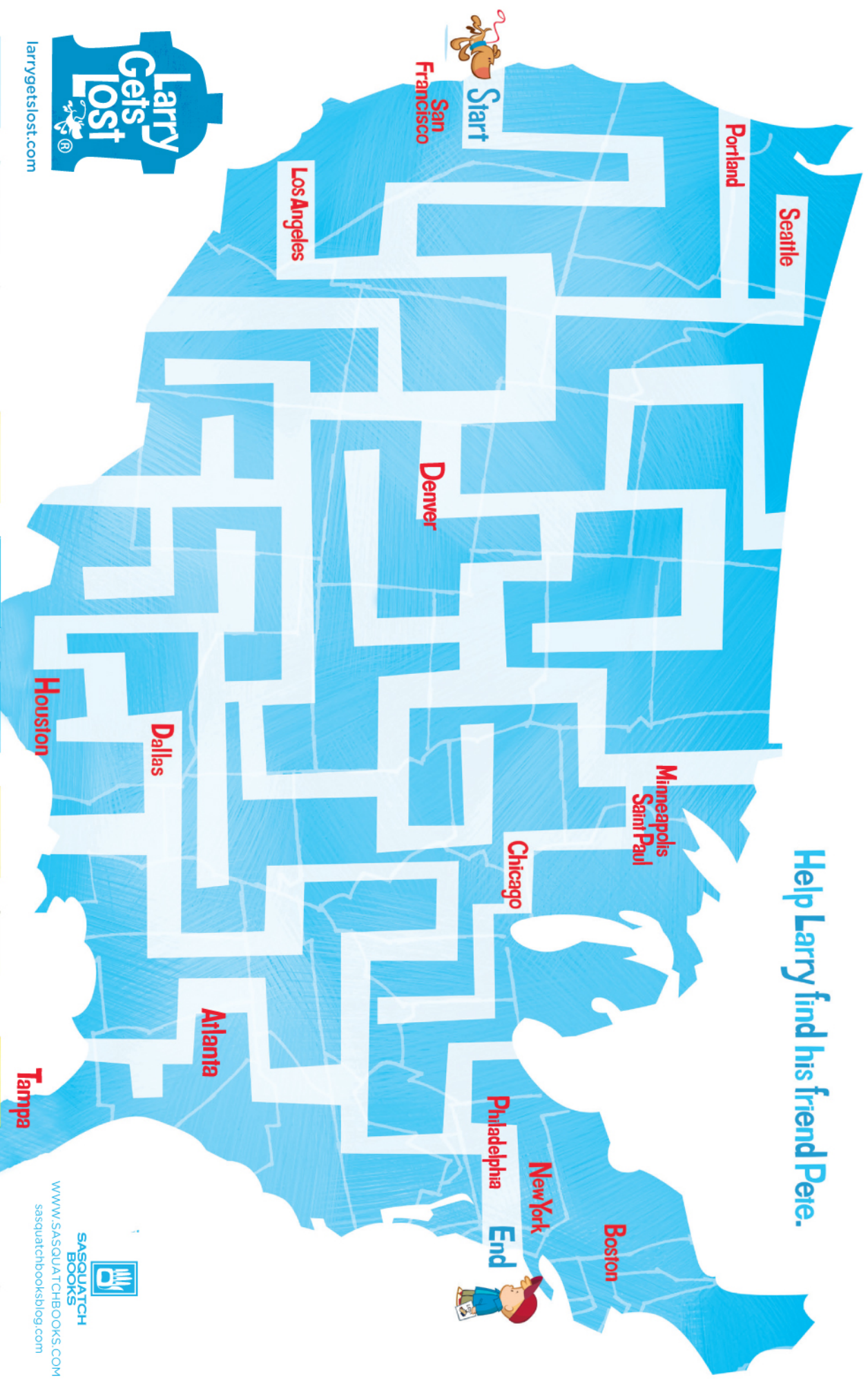
## Papercraft Family Car

### INSTRUCTIONS

1. Carefully cut out car along the **red** and white lines.
2. Fold along all dotted lines as shown.
3. Glue the tabs and complete the car.



Help Larry find his friend Pere.



[larrygetslost.com](http://larrygetslost.com)

[www.SASQUATCHBOOKS.COM](http://www.SASQUATCHBOOKS.COM)  
[sasquatchbookslb.com](http://sasquatchbookslb.com)



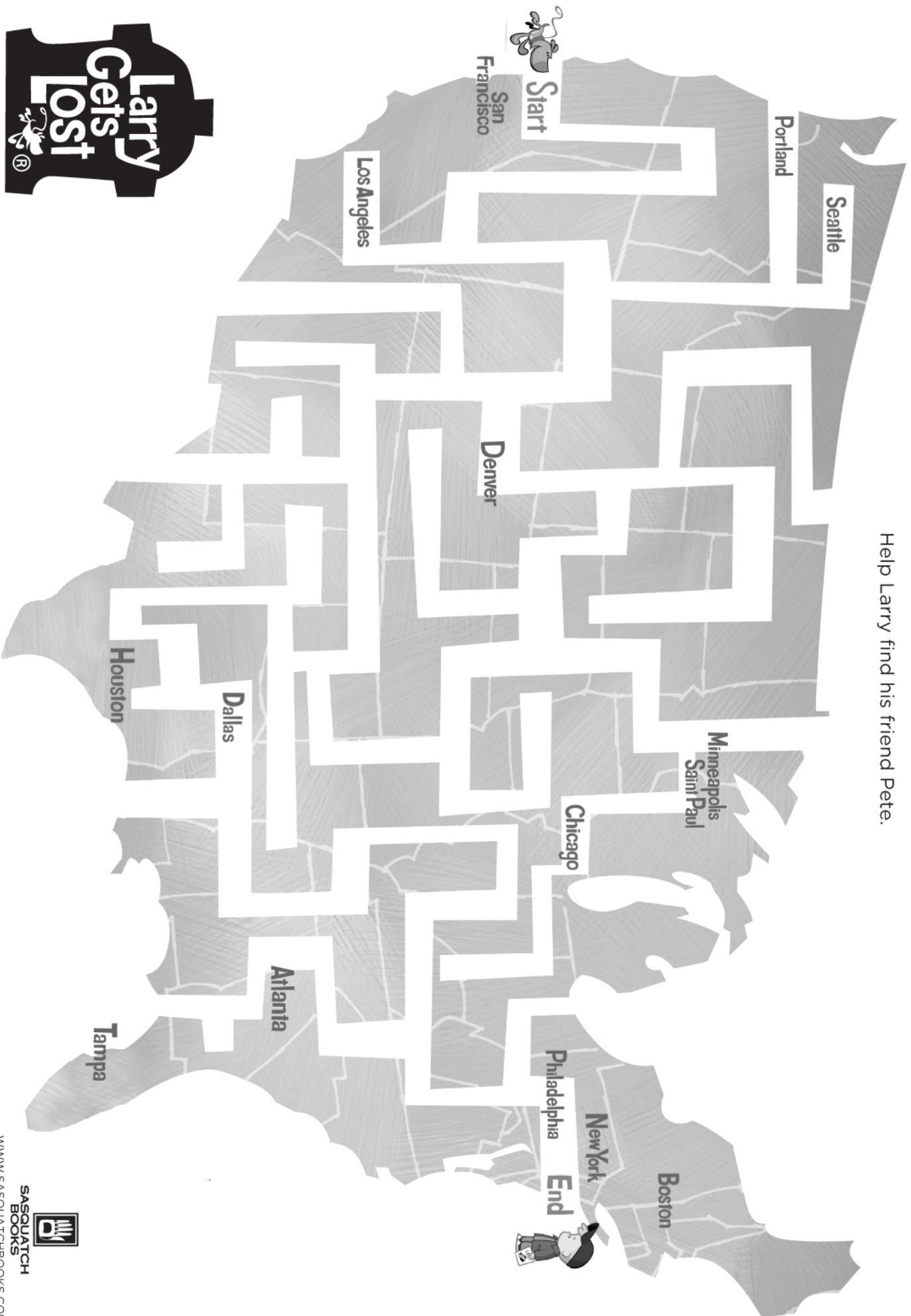
SASQUATCH BOOKS



Created & Illustrated by John Skewes, the best-selling Larry Gets Lost children's books are available wherever books are sold.



Help Larry find his friend Pete.



# How to Draw Larry

1. Using a pencil, draw a circle.



2. Draw a second circle and add Larry's mouth.



3. Add the collar and a teardrop shape for Larry's body.



4. Add the legs, ears, and tail.



5. Use a **marker** to trace over the sketch. Add eyes and leash.



6. Erase the pencil line.



HAVE YOU

SEEN

ME







**KEEP  
CALM  
AND  
GET  
LOST**